



Farnborough Road Infant School

'LEARNING, CARING AND ACHIEVING TOGETHER'
Newsletter 5 17th October 2025



What an absolute honour it was to meet the TRH the Prince and Princess of Wales. Thanks to Elsie's Story Charitable Trust for the nomination for their visit and making it possible for all the children and staff to be able to welcome them to Farnborough Road Schools. Our staff had only one hours notice to prepare themselves and the children for the visit as it was embargoed until The Prince and Princess left our site. What a memory for everyone at our school.



Football's coming home!

I had the privilege of taking 13 Y1 and Y2 girls with Mrs Barrow last week to their first football tournament of the year. The girls made me very proud with their sportsmanship and manners after each game shaking hands with their opposing team and the referee.

Our Year 2 girls won their group to bring home the cup back to FRIS again this year!



Well done girls!




Join us for a School Tour

Come and see what our Early Years provision has to offer

- 2 year old Nursery
- 3 year old Nursery
- Reception

Individual school tours available 9.30am, 4pm & 5pm

Book a school tour with Miss Sephton on 01704 577637 or email admin.fris@schools.sefton.gov.uk



Wrap around care available 7.45am till 6pm including holidays

Our school values are:

COMPASSION PERSEVERANCE HONESTY RESPECT and **LOVE AND KINDNESS**



We were also honoured to be invited to be a part of the inaugural dinner to mark one year of Elsie's Story Charitable Trust. The evening marked the huge achievement of the charity raising £1,061,000 to help support young people in the Southport community, raising a further £67,000 on the night itself. We have loved playing a small part of their journey and look forward to helping even more in the coming year.



FRIDAY 21ST NOVEMBER
3PM, UNDER THE CANOPY



Our PTFA annual general meeting took place on 3rd October and our new committee was formed:

PTA Chair: Ema McCoy and Alice Keighley

Treasurer: Linda Medway

Secretary : Rebecca Laird

If you would like to support the PTFA and contribute to the lovely events they organise please follow us on Facebook

<https://www.facebook.com/groups/552066501669330>

PTFA.fris@schools.sefton.gov.uk

HUGE THANK YOU TO Access Point Southport who have very kindly donated £1000 of Amazon vouchers for our school. I have decided to ask the class teachers to decide what they would like for their classroom and spread the joy!



Best Class Attendance this week is :

98.7% Butterflies

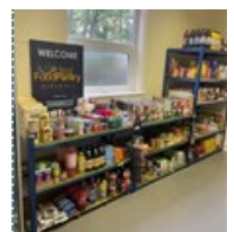
99.5% Room 8

Well Done to all of the children in these classes.

Whole school attendance for the year to date is 96%. (National Whole School Attendance Expectation is 97%)

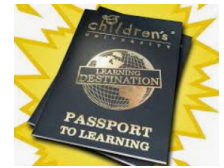
HUGE THANK YOU for all your donations to the Food Panty this Harvest.

Thank you to Rev Jennie Hardy from St John's Church, Birkdale for conducting our assemblies too.





Children's University is a national charitable organisation which celebrates learning that takes place outside of school hours. Pupils collect 'credits' for the time they spend outside of school hours participating in a huge variety of different learning activities.



Top up Children's University Credits!

Laura Ashcroft from Children's University is coming to visit the children on Tuesday to talk to them about all the ways they can Top Up their Children's University Credits during Reception, Year 1 and Year 2. If you would like your child to graduate from Children's University at the end of Year 2 start collecting credits using these easy steps.

1. Children can attend school clubs—these will enable your child to graduate if you attend the teacher run clubs over the 3 years in the main school.
2. Children can attend paid school clubs and we collect the credits for these in school.
3. If children attend clubs outside school purchase a Children's University Passport from the school office and make sure your child's club is accredited and get the organiser to stamp their passport
4. If you visit a Learning Destination don't forget to take your Children's University Passports out and about with you -collect extra credits at eg Martin Mere, Farmer Teds, museums and theatres
5. Complete the holiday challenges (see Dojo next week for the Half term Challenges set this Autumn) and send evidence to : LiverpoolCU@elevate-ebp.co.uk #halftermfun#extraCUcredits

FRIS PTFA PRESENTS

AUTUMN GLOW

DRINK, CRISPS & SWEETS

Disco

+ FREE GLOW STICK BRACELET

THURSDAY 23 OCTOBER

£3 ON PARENTPAY

Reception: 2:25 to 3:05pm - Children can wear own clothes to school

Year 1: 3:15 to 3:55pm - Children can bring own clothes to change into in a named bag

Year 2: 3:45 to 4:45pm - If attending after school club, children can bring own clothes in a named bag

Children in afterschool club will be taken to and from the disco

Payable on ParentPay until Friday 24th October



FRIS PTFA PAY IT FORWARD NOW LIVE ON PARENTPAY!

Our PTFA committee made a promise in 2022 to allow ALL our Pupil Premium children free places at our events. This includes any other families who might be struggling financially.



However, this costs money!



All voluntary contributions made into the **Pay It Forward** pot on [ParentPay](#), go towards a free place at our PTFA events for those children.

No matter how big or small, any contributions are so gratefully received.



Thank you!



P Please be considerate about your parking

Mr Antell and I are already being sent emails regarding our parents' parking in the surrounding community.

Remember

Farnborough Road is a permit only road.

The pavement is NOT for parking on.

AND please park respectfully around our neighbours drives.

If everyone works together we can also make the area around our school safer for our children.



Next week FRIS are supporting the launch of 2 Wish in the North West with a visit from Gorgeous George,

2 Wish provide immediate and ongoing support, around bereavement through complementary therapy and family crafts and coffee mornings.

School can refer families into this charity for support.

Please contact me on Dojo if you would like to know more about 2 Wish and the support they provide.



Make it simple! Make it real! Make it joyful! Make it happen!

Raise **FREE** funds for **FARNBOROUGH ROAD INFANT SCHOOL PTFA**

On behalf of FRIS PTFA,

Thank you

For your support!



easyfundraising turns your online shopping into everyday magic!



easyfundraising | Parentkind



Earn an App-solutely FREE £2 donation for:

- 1 Use the QR code right to install the free easyfundraising app
- 2 Use the app to find our PTA and sign up as a supporter
- 3 We get a £2 bonus donation each time this happens before 31st October



Free donations for our PTA when you shop online



8000+ online retailers



FARNBOROUGH ROAD INFANT SCHOOL
HOLIDAY DATES - 2026/27
 (including INSET days)

2026		
AUTUMN TERM		
INSET	Tuesday 1 st September	School Closed for pupils Teachers and TAs in school
INSET	Wednesday 2 nd September	School Closed for pupils Teachers and TAs in school
Half Term 1	Start of Term: Thursday 3 rd September at 08.45am School finishes for half term on Friday 23 rd October at 3.15pm	
Half Term	Monday 26 th October to Friday 30 th October [one week]	
Half Term 2	Return to school Monday 2 nd November at 08.45am School Finishes for end of term on Friday 18th December at 2.00pm	

2027		
SPRING TERM		
Half Term 3	Start of Term: Monday 4th January at 08.45am School finishes for half term on Friday 12th February at 3.15pm	
Half Term	Monday 15th February to Friday 19 th February [one week]	
Half Term 4	Return to school Monday 22 nd February at 08.45am School finishes for end of term Thursday 25 th March at 2.00pm	

2027		
SUMMER TERM		
Half Term 5	Start of Term: Monday 12 th April at 08.45am School finishes for half term on Thursday 27 th May at 3.15pm	
Bank Holiday	Monday 3 rd May	School Closed for all
INSET	Friday 28 th May	School Closed for pupils Teachers and TAs in school
INSET	Monday 7 th June	School Closed for pupils Teachers Report Writing
Half Term	Friday 28 th May to Monday 7 th June [one week and 2 days]	
Half Term 6	Return to school Tuesday 8 th June at 08.45am School finishes for end of term on Tuesday 20 th July at 2.00pm	
INSET	Wednesday 21 st July	School Closed for pupils Teachers and TAs in school

Our school values are:

COMPASSION PERSEVERANCE HONESTY RESPECT and LOVE AND KINDNESS